

THIS DRAWING IS UNPUBLISHED. RELEASED FOR PUBLICATION
 © COPYRIGHT - By - ALL RIGHTS RESERVED.

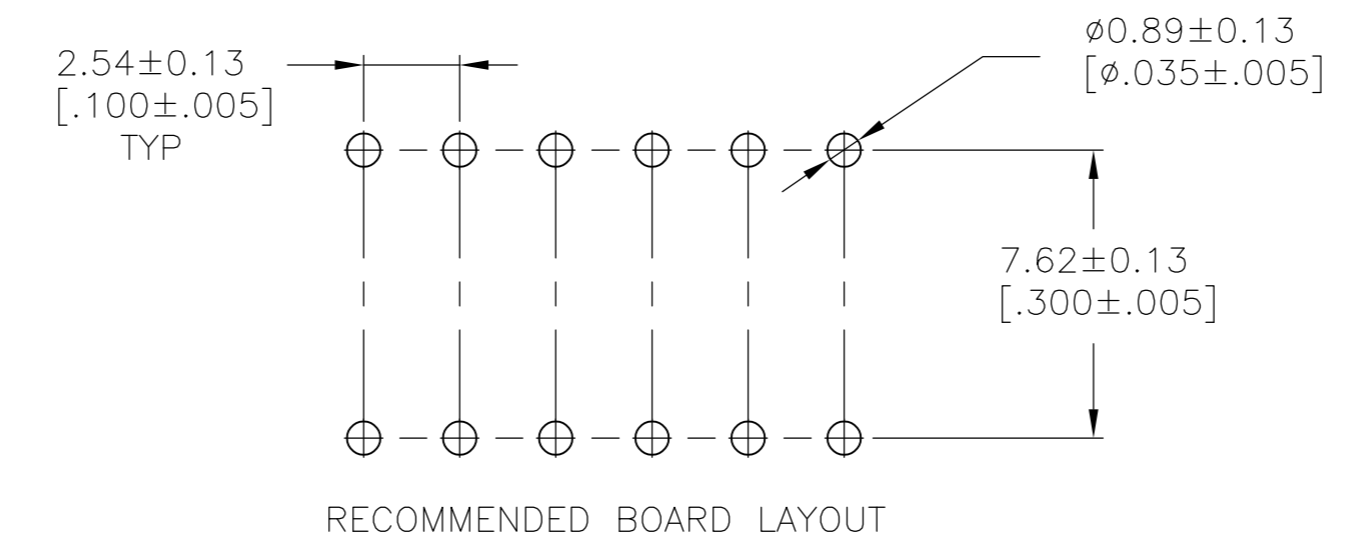
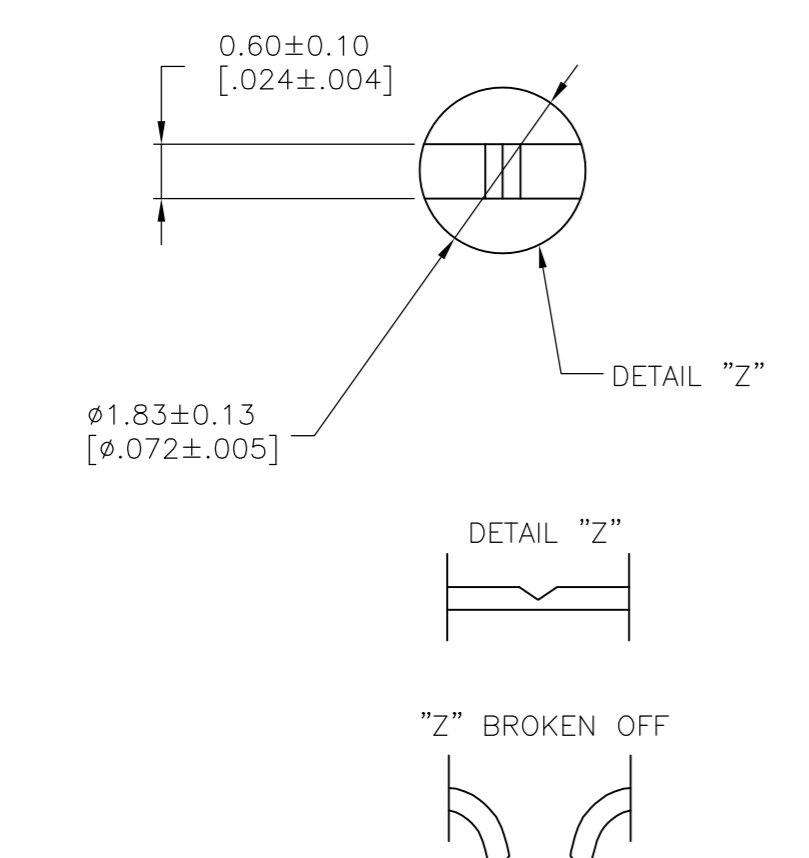
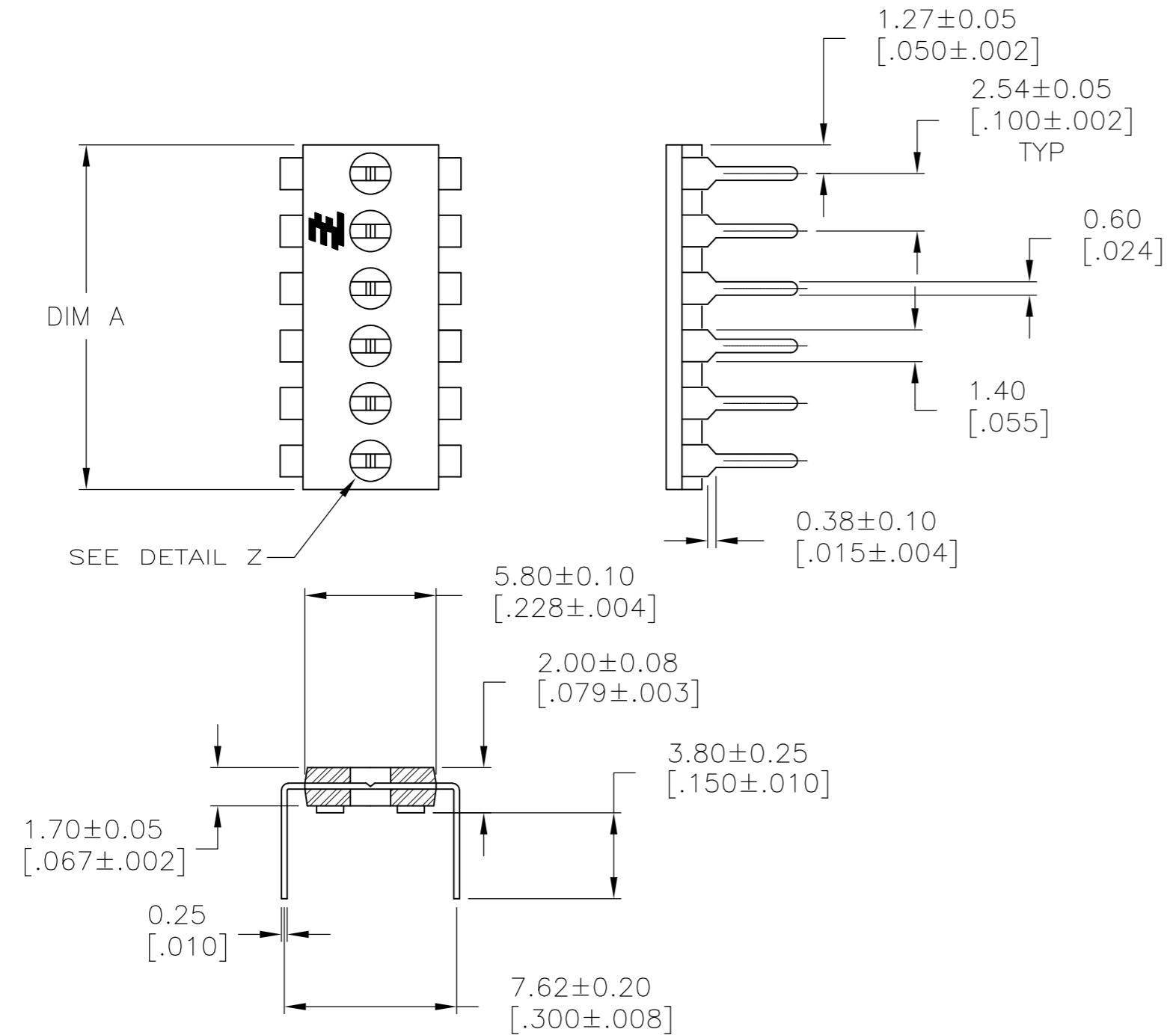
LOC		DIST		REVISIONS			
P	LTR	DESCRIPTION		DATE	DWN	APVD	
AD	00	C	REVISED PER ECO-12-007413	21APR12	KH	PO	

SPECIFICATIONS:

MATERIAL:

CASE: HTN 30% GF UL94V-0
 TERMINAL: COPPER ALLOY, TIN OVER NICKEL PLATE

⚠ ALL MATERIALS AND FINISHES SHALL COMPLY WITH EU DIRECTIVE 2002/95/EC OF 27JAN2003 (ROHS)



30.48 [1.200]	12	1-1825190-0
25.40 [1.000]	10	1825190-9
22.86 [.900]	9	1825190-8
20.32 [.800]	8	1825190-7
17.78 [.700]	7	1825190-6
15.24 [.600]	6	1825190-5
12.70 [.500]	5	1825190-4
10.16 [.400]	4	1825190-3
7.62 [.300]	3	1825190-2
2.54 [.200]	2	1825190-1
DIM A	POSITION	PART NO.

THIS DRAWING IS A CONTROLLED DOCUMENT.		DWN	B.S.VISWESWARA	06MAY05
DIMENSIONS: mm [INCHES]		CHK	M.S.SARVER	-
TOLERANCES UNLESS OTHERWISE SPECIFIED:		APVD	M.S.SARVER	-
0 PLC	± -	PRODUCT SPEC	-	-
1 PLC	± -	APPLICATION SPEC	-	-
2 PLC	± 0.03[.001]	-	-	-
3 PLC	± -	-	-	-
4 PLC	± -	-	-	-
ANGLES	± -	-	-	-
MATERIAL	SEE TABLE	FINISH	-	-
WEIGHT		-	-	-
CUSTOMER DRAWING		SCALE	4:1	SHEET 1 OF 1
NAME		SHUNT, DIP, PROGRAMMABLE	RESTRICTED TO	-
SIZE	A2	CAGE CODE	00779	DRAWING NO
DRAWING NO		C=1825190	REV	C